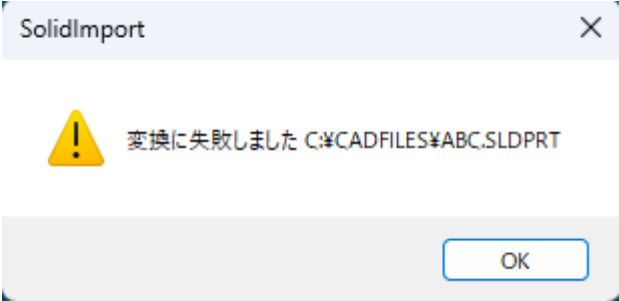


XXXXXXXXXXXXXXXXXXXXXXXX

XXXX

XX



XXXXXX

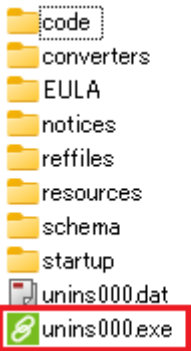
XXSolidLinkXXXXXXXXXXXXXXXXXXXX

 SolidLink 2019 R1	Vero Software
 SolidLink 2020	Vero Software
 SolidLink 2022.0	Hexagon
 SolidLink 2022.11	Hexagon
 SolidLink 2022.13	Hexagon
 SolidLink 2022.14	Hexagon
 SolidLink 2023.1	Hexagon
 SolidLink 2023.3	Hexagon
 SolidLink 2024.1	Hexagon
 SolidLink 2024.2	Hexagon
 SolidLink 2024.3	Hexagon
 SolidLink 2024.4	Hexagon
 SolidLink 2025.1	Hexagon
 SolidLink 2025.2	Hexagon

XXXXXXXXXXXX

XXXXXXXXXXXXunins000.exeXXXXXXXXXXXXXXXXXXXX

C:\Program Files\Common Files\Hexagon\SolidLink
20xx.x\unins000.exe



XXXXXXXXXXXXSolidLinkXXXXXXXXXXXX

□□□□□□USB:\ALPHACAM\SolidLink



Alphacam USB AlphaCUT

2. [CLS]

Diagram illustrating a sequence of 16 input tokens (represented by boxes) being processed by a model to produce a single CLS token output.



4.

<https://licom.co.jp/download/HASP.zip>

HASP USBキー



9.USB

10.CLS

→CLS80100

11.Alphacam

076-439-0666

support@licom.co.jp

2025ver.

ALPHACAM

C:\ALPHACAM

C:\Program Files\Hexagon

C:\Program Files\Common Files\Hexagon

C:\Program Files (x86)\Common Files\Hexagon

C:\ProgramData\Hexagon

C:\ProgramData\Vero Software

C:\Users\[User Account Name]\AppData\Local\Alphacam

C:\Users\[User Account Name]\AppData\Local\Hexagon

[illegible]

C:\Program Files\NVIDIA Corporation

C:\Program Files (x86)\NVIDIA Corporation

C:\ProgramData\NVIDIA

C:\ProgramData\NVIDIA Corporation

C:\temp

C:\Windows\Temp

C:\Users\[User Account Name]\AppData\Local\Temp

□ □ □ □ □ □

C:\Program Files\Hexagon\ALPHACAM 2025\Acam.exe

□ □ □ □ □

*.EVT

*.EVTX

* . LOG

*.OST

*.PST